

T8 SERIES COMMERCIAL INDOOR LIGHTING

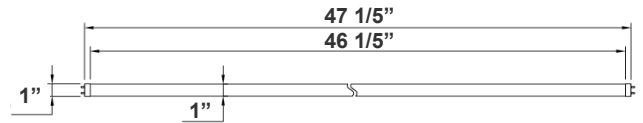
- T8-EZ6-GS-4FT-15W-30K-F
- T8-EZ6-GS-4FT-15W-35K-F
- T8-EZ6-GS-4FT-15W-40K-F
- T8-EZ6-GS-4FT-15W-50K-F

Customer Name: _____

Project Name: _____

Note: _____

Type: _____



Crystal Glass T8 Tube switches from fluorescent tubes to LED, giving more cost efficiency by providing the same amount of lumen output with less energy consumption. The LED tube offers a soft and bright light distribution.

47 1/5"(L) X 1" (D)

Features

- Type A + B (Dual UL)
- Type A: With Existing Ballast - UL No. E366061
- Type B: Ballast Override (AC Direct), Connect One End or Both Ends (Dual Function) - UL No. E342884
- 5-Year Warranty
- Frosted Lens

Technical Specifications

Electrical:

- Voltage: 120-277V; 50/60Hz AC
- Power Factor: >0.90
- THD: <20%
- Wattage: 15W
- Efficacy: 120 LPW

Mechanical:

- Base Type: G13
- Glass Tube: Frosted
- Ambient Operating Temperature: -13°F to 113°F
- IP Rating: IP20 (Indoor)

Lighting:

- Dimming: Non Dimmable
- Total Lumens: 1800LM
- Color Temperatures: 3000K/3500K/4000K/5000K
- Color Rendering Index: CRI ≥ 80
- Beam Angle: 120°
- Rated life: 50,000 hrs

Applications:

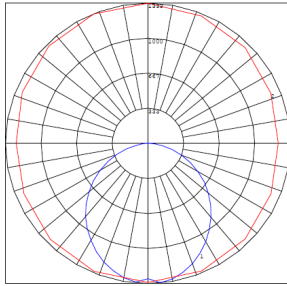
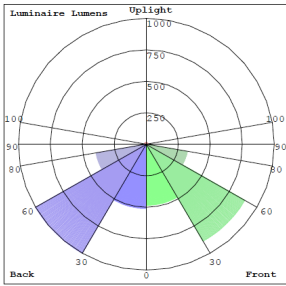
- Direct Fit 4 T8 LED tubes do not burn out easily and provide bright and even lighting to schools, office spaces, retail stores and storage rooms.

Other Models:

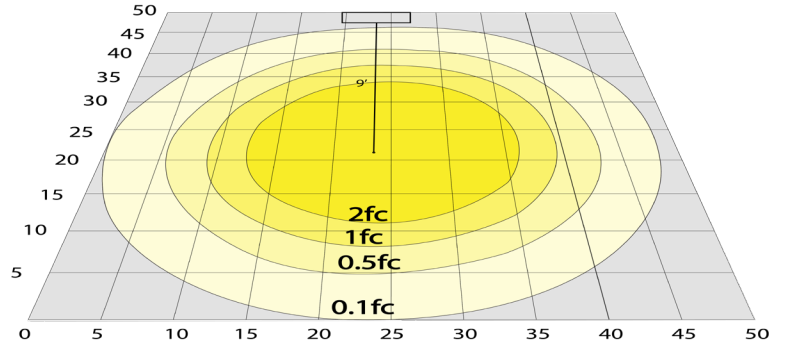
- 15W | 1800LM | T8-EZ6-GS-4FT-15W-30K-C
- 15W | 1800LM | T8-EZ6-GS-4FT-15W-35K-C
- 15W | 1800LM | T8-EZ6-GS-4FT-15W-40K-C
- 15W | 1800LM | T8-EZ6-GS-4FT-15W-50K-C



Photometrics: T8-EZ6-GS-4FT-15W



BUG Rating: B2-U2-G1

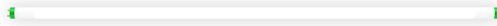


Area 50'x 50' Mounting Height: 9'

Other Views:



Close-up View



Front View



Socket View

Performance Table: T8-EZ6-GS-4FT-15W

MODEL NO.	Wattage	Voltage	Lumens	Color Temp.	BUG Rating	LPW
T8-EZ6-GS-4FT-15W-30K-F	15W	120-277V	1800LM	3000K	B2-U2-G1	120
T8-EZ6-GS-4FT-15W-35K-F	15W	120-277V	1800LM	3500K	B2-U2-G1	120
T8-EZ6-GS-4FT-15W-40K-F	15W	120-277V	1800LM	4000K	B2-U2-G1	120
T8-EZ6-GS-4FT-15W-50K-F	15W	120-277V	1800LM	5000K	B2-U2-G1	120

Sample Ordering

Model Material Size Watt Color Temp. Lens Type

T8 - EZ6 - GS - 4FT - 15W - [] - F

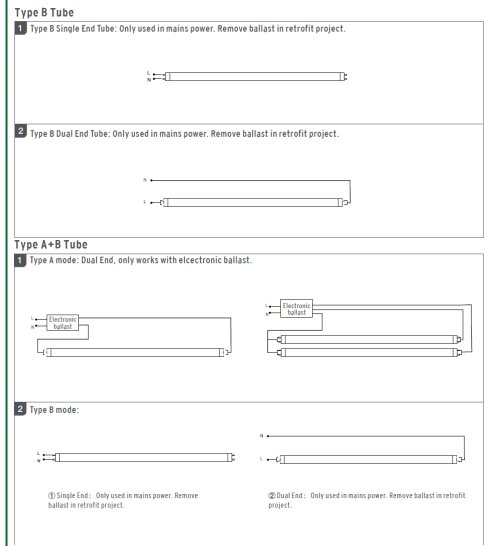
30K = 3000K
35K = 3500K
40K = 4000K
50K = 5000K

Example:

1. T8-EZ6-GS-4FT-15W-30K-F

(FOR 15W 3000K T8 4FT TUBE LAMP 120-277V)

WIRING DIAGRAM:



Other Models: T8-EZ6-GS-4FT-15W-C (Clear Model)



Close-up View



Front View



Socket View